

Analytical Report

Sample ID	1073	-	Analysis Service - A0131	Ordered by: Quasar Chemicals
Expected	Emylcamate			
Sample adulterated?	No			
Sample Appearance				
Sample type	Service	-		
Date of sample receipt	11-Apr-2024			
Date of analysis	23-May-2024			
Date of Report	24-May-2024			

Qualitative and Quantitative Results

Substances identified	Harm Reduction information	Chemical Class	Pubchem ID	analytical techniques used
Emylcamate 99.4%	https://psychonautwiki.org/wiki/Emylcamate	Other	6526	FTIR/LCMS/NMR

Comment:

* uncertainty of measurement +/- 5 %

***The Analysis Report is not a warranty or advertisement for the quality of any supplier or product!
We do not claim nor make any guarantees or recommendations regarding the safety of the analysed samples for human consumption.***

Kykeon Analytics Ltd. assumes no liability for the results or for any damages that may arise from the use of the Analysis Report. The Analysis Report is not to be used for defence purposes in any type of proceeding without the explicit consent of KYKEON, its contents shall not be disclosed to any third party for marketing purposes. The Analysis Report shall not be altered, modified, amended, falsified, forged or changed in any way.

Detailed information regarding our workflow including a full description of the analytical methods applied

is freely available under <https://www.kykeonanalytics.com/services/users/>

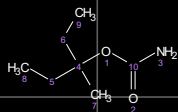
Attachments:

-
-
-

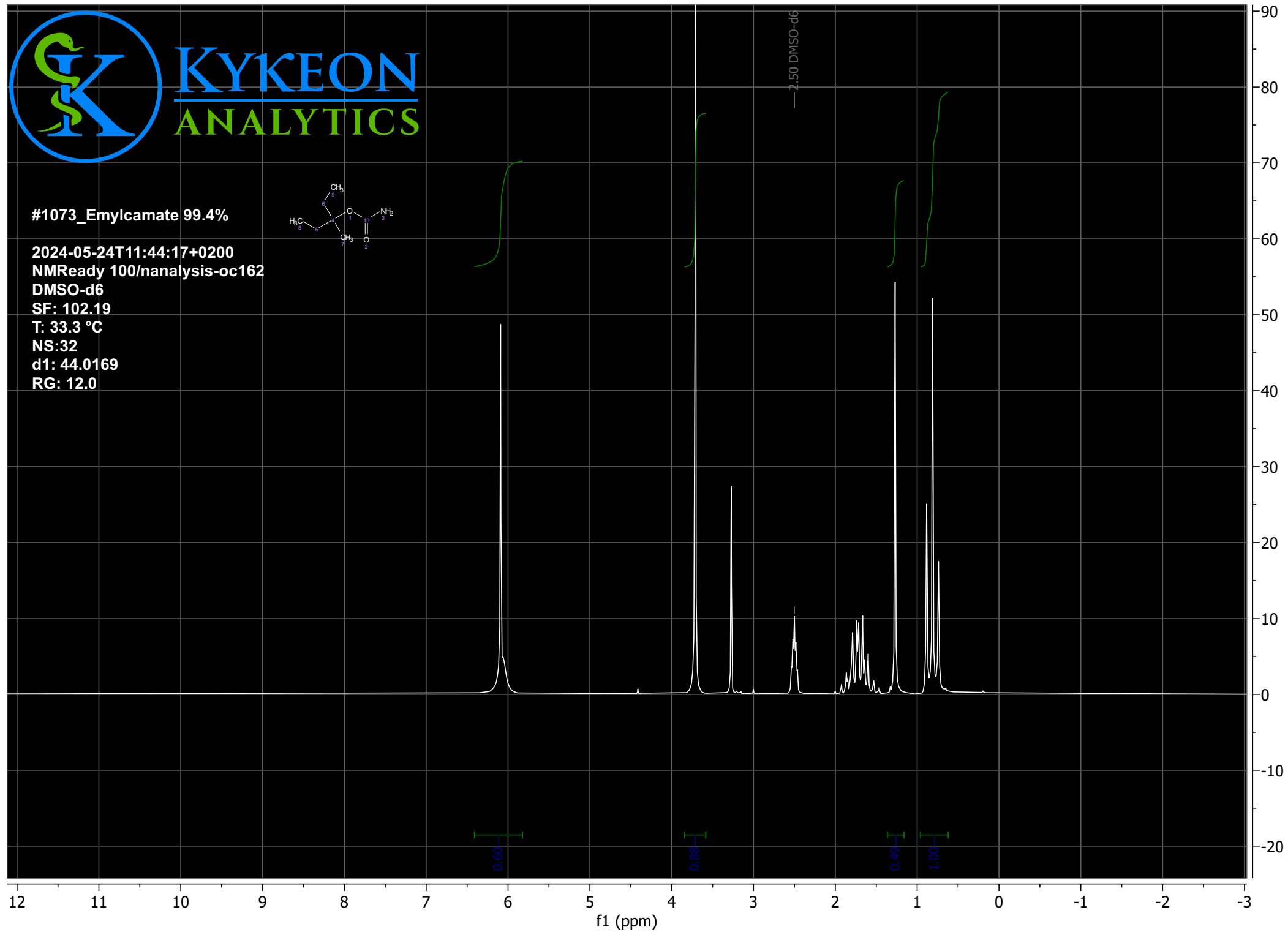


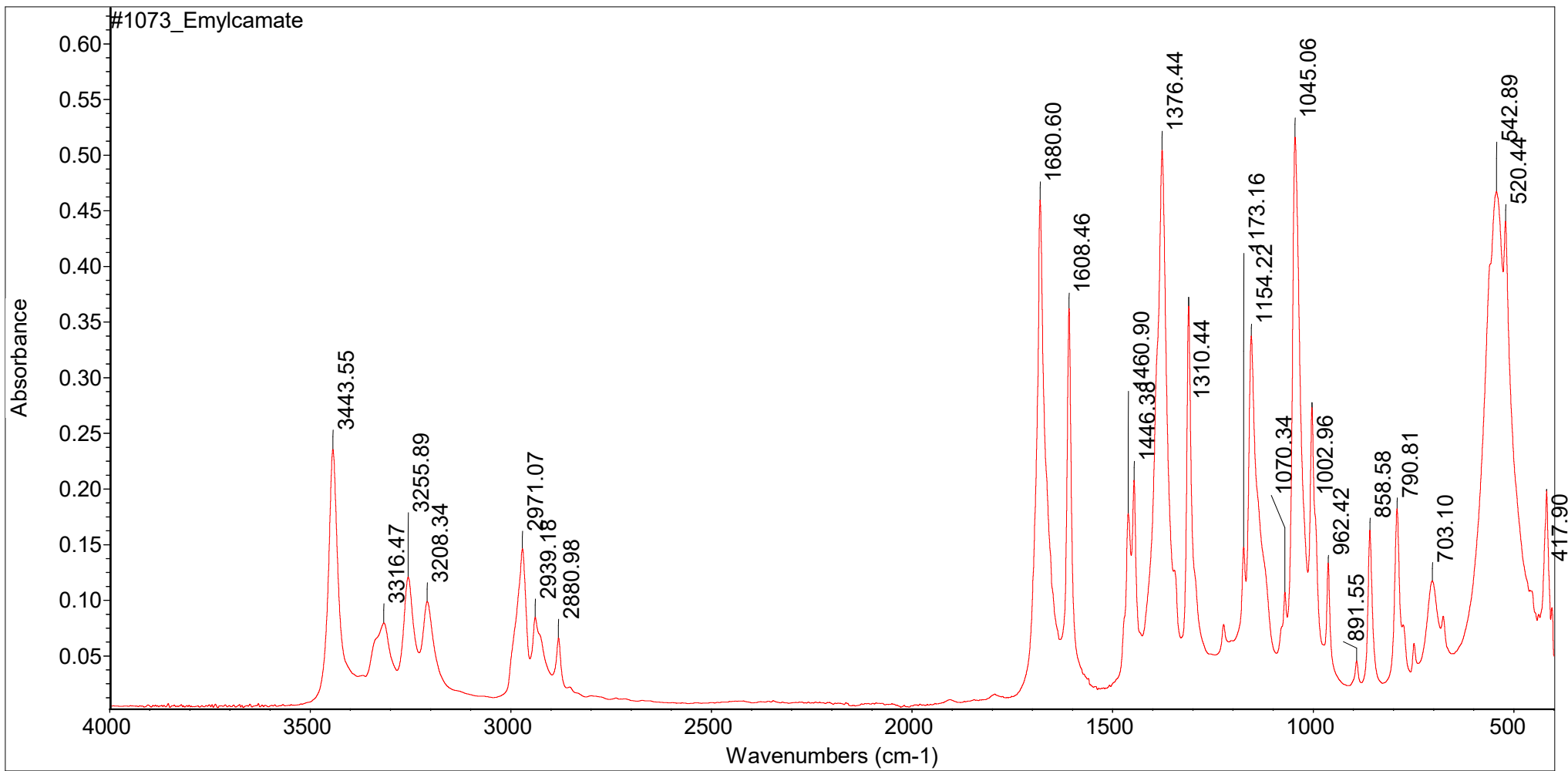
KYKEON
ANALYTICS

#1073_Emylcamate 99.4%



2024-05-24T11:44:17+0200
NMReady 100/nanalysis-oc162
DMSO-d6
SF: 102.19
T: 33.3 °C
NS:32
d1: 44.0169
RG: 12.0





Thu Apr 11 14:44:21 2024 (GMT+02:00)

FIND PEAKS:

Spectrum: #1073_Emylcamate
 Region: 4000.00 400.00
 Absolute threshold: 0.021
 Sensitivity: 50
 Peak list:

Position:	Intensity:
417.90	0.198
520.44	0.441
542.89	0.467
703.10	0.117
790.81	0.182
858.58	0.163
891.55	0.0452
962.42	0.134

Position:	1002.96	Intensity:	0.273
Position:	1045.06	Intensity:	0.516
Position:	1070.34	Intensity:	0.107
Position:	1154.22	Intensity:	0.337
Position:	1173.16	Intensity:	0.148
Position:	1310.44	Intensity:	0.364
Position:	1376.44	Intensity:	0.504
Position:	1446.38	Intensity:	0.208
Position:	1460.90	Intensity:	0.178
Position:	1608.46	Intensity:	0.362
Position:	1680.60	Intensity:	0.460
Position:	2880.98	Intensity:	0.0658
Position:	2939.18	Intensity:	0.0846
Position:	2971.07	Intensity:	0.146
Position:	3208.34	Intensity:	0.0986
Position:	3255.89	Intensity:	0.121
Position:	3316.47	Intensity:	0.0793
Position:	3443.55	Intensity:	0.235