

## Analytical Report

Sample ID	703 - Analysis Service - Q12	sample submitted by <a href="mailto:quasar-chemicals.de">quasar-chemicals.de</a>
Expected	Etomethazene HCl	
Sample adulterated?	No	
Sample Appearance		
Sample type	Research Chemical -	
Date of sample receipt	11-02-2023	
Date of analysis	11-11-2023	
Date of Report	11-11-2023	

### Qualitative and Quantitative Results

Substances identified	Purity / Quantity	Harm Reduction information	Chemical Class	Pubchem ID	analytical techniques used	
					Identification	Quantification
Etomethazene	>98 % *	<a href="https://psychonautwiki.org/wiki/Etomethazene">https://psychonautwiki.org/wiki/Etomethazene</a>	Nitazene	#N/A	LCMS	NMR

\* uncertainty of measurement +/- 5 %

***The Analysis Report is not a warranty or advertisement for the quality of any supplier or product!  
We do not claim nor make any guarantees or recommendations regarding the safety of the analysed samples for human consumption.***

*Kykeon Analytics Ltd. assumes no liability for the results or for any damages that may arise from the use of the Analysis Report. The Analysis Report is not to be used for defence purposes in any type of proceeding without the explicit consent of KYKEON, its contents shall not be disclosed to any third party for marketing purposes. The Analysis Report shall not be altered, modified, amended, falsified, forged or changed in any way.*



Detailed information regarding our workflow including a full description of the analytical methods applied

is freely available under <https://www.kykeonanalytics.com/services/users/>

Attachments:                    LCMS Detailed report  
    1H NMR Spectrum  
    FTIR Spectrum

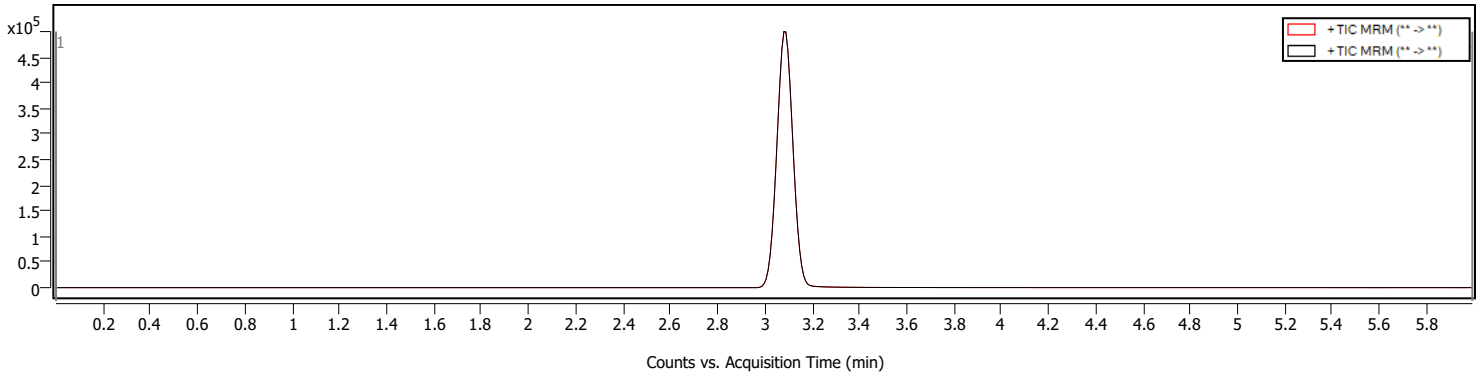
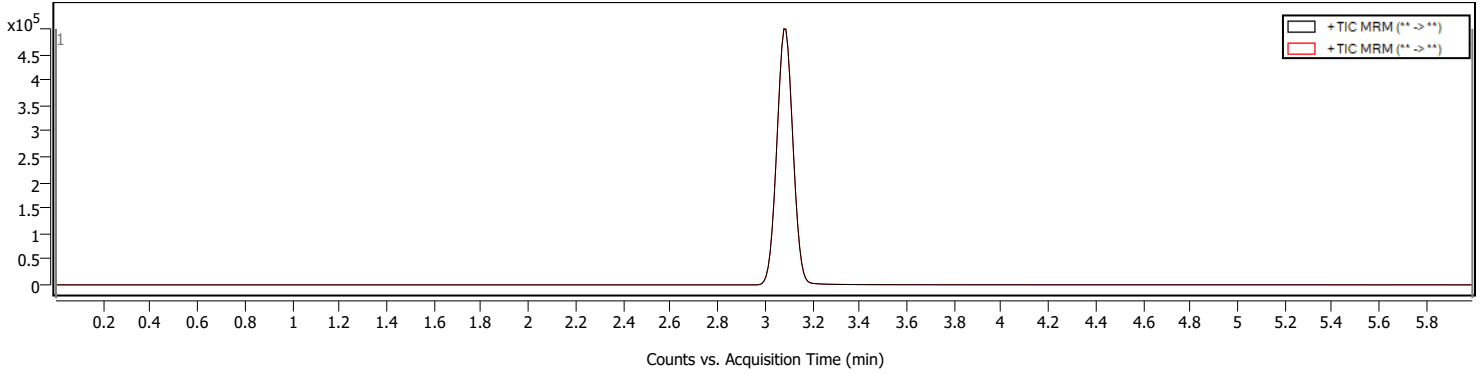
# Qualitative Analysis Report



## Sample Information

<b>Name</b>	703_Etomethazene	<b>Data File Path</b>	D:\Kykeon\Data\2023\11-07\703_EtomethazeneMRM.d
<b>Sample ID</b>		<b>Acq. Time (Local)</b>	11/7/2023 7:50:47 PM (UTC+01:00)
<b>Instrument</b>	Instrument 1	<b>Method Path (Acq)</b>	D:\Kykeon\methods\dMRM-605min50mmNormalC18-Etomethazene.m
<b>MS Type</b>	QQQ	<b>Version (Acq SW)</b>	Ultivo LC/TQ C.01.00 (B1677.1 SR1)
<b>Inj. Vol. (ul)</b>	10	<b>IRM Status</b>	
<b>Position</b>	P1-C8	<b>Method Path (DA)</b>	D:\Kykeon\methods\ReportWorkflowMethod-MRM.m
<b>Operator</b>		<b>Result Summary</b>	1 qualified (1 targets)

## Sample Chromatograms



## Compound Summary

Cpd	Name	Formula	Mass	RT	Area	m/z	Algorithm
1	Etomethazene			3.080	2337800	366.5	MRM

# Qualitative Analysis Report

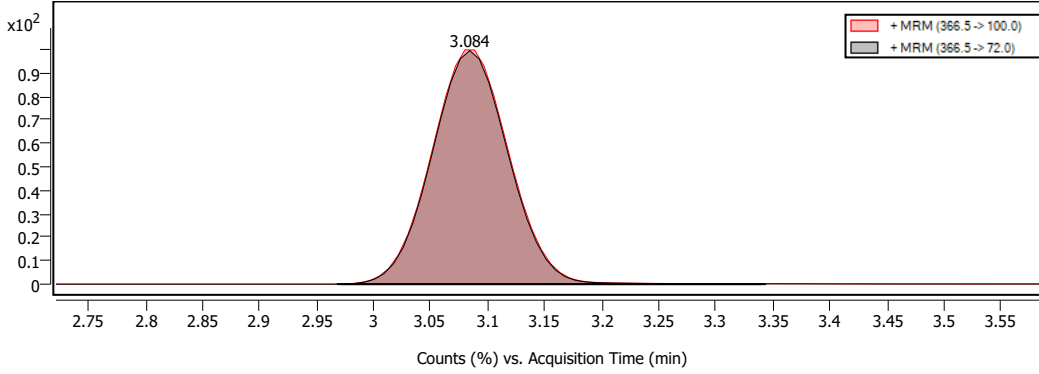


## Compound Details

### Cpd. 1: Etomethazene

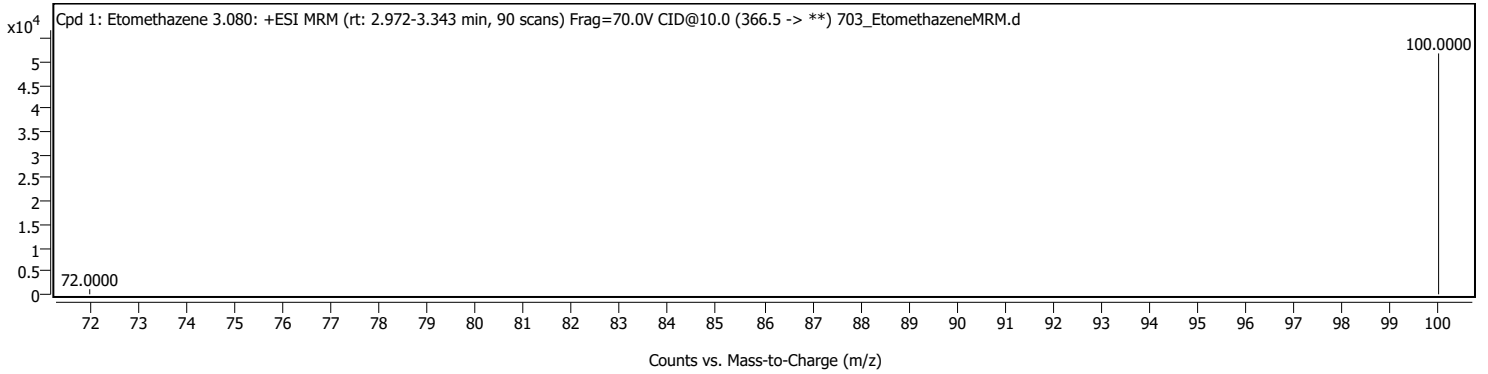
Name	Formula	Mass	RT	Area	m/z	m/z (primary prod.)	CE	FV	Algorithm
Etomethazene			3.080	2337800	366.5	100.0	10.00		MRM

### Compound Chromatograms (overlaid)



Structure

### MS/MS Spectra



MassHunter Qual 10.0  
(End of Report)



**KYKEON**  
**ANALYTICS**

#703 Etomethazene HCl

Purity: >98 %

2023-11-08T12:53:06+0100

NMReady 100/nanalysis-oc162

DMSO-d6

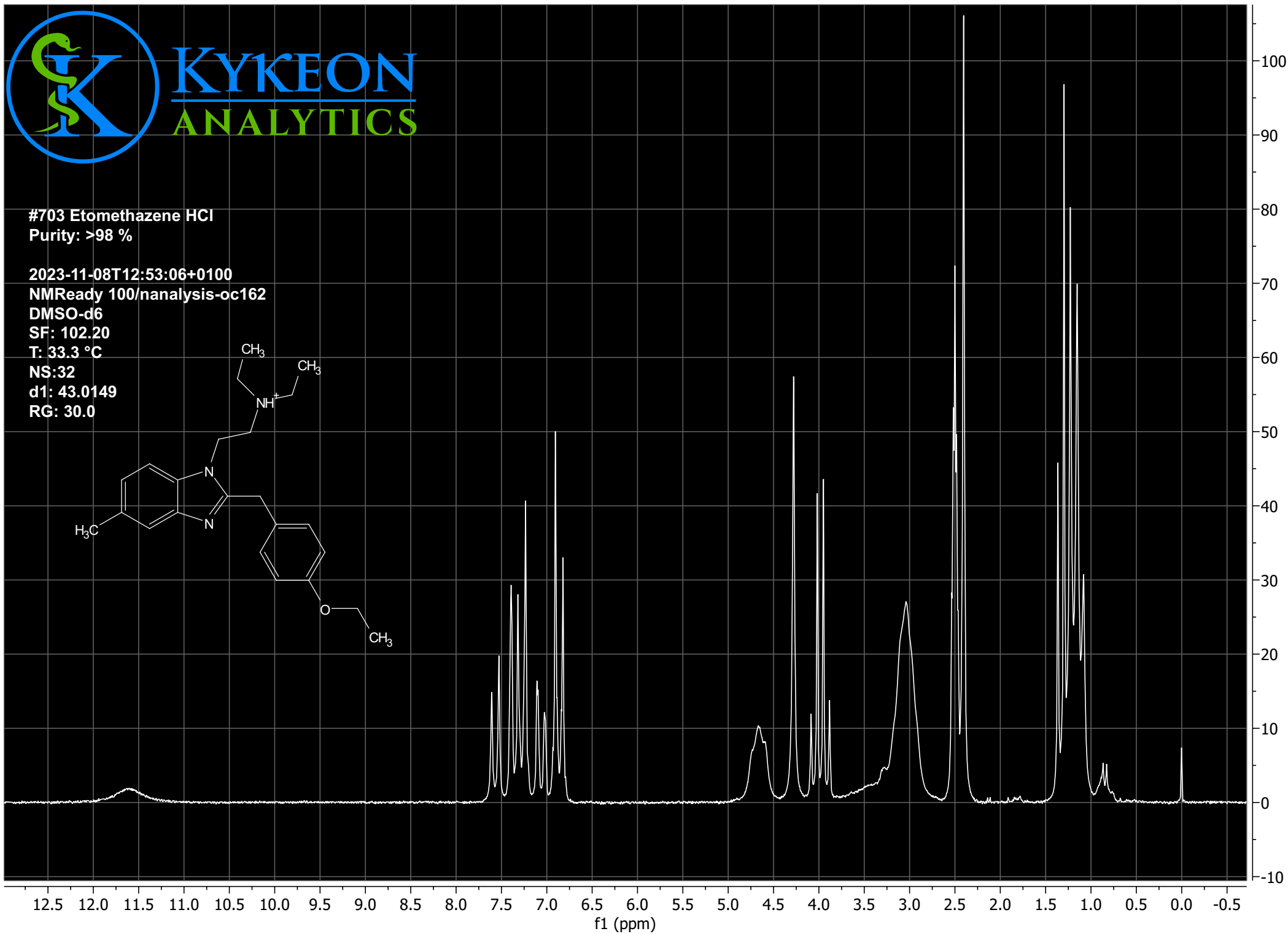
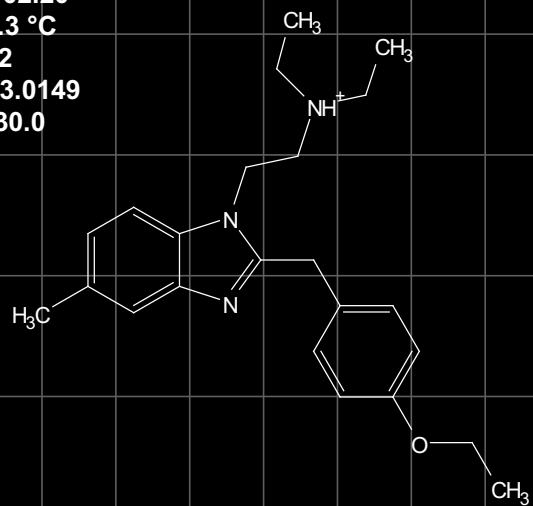
SF: 102.20

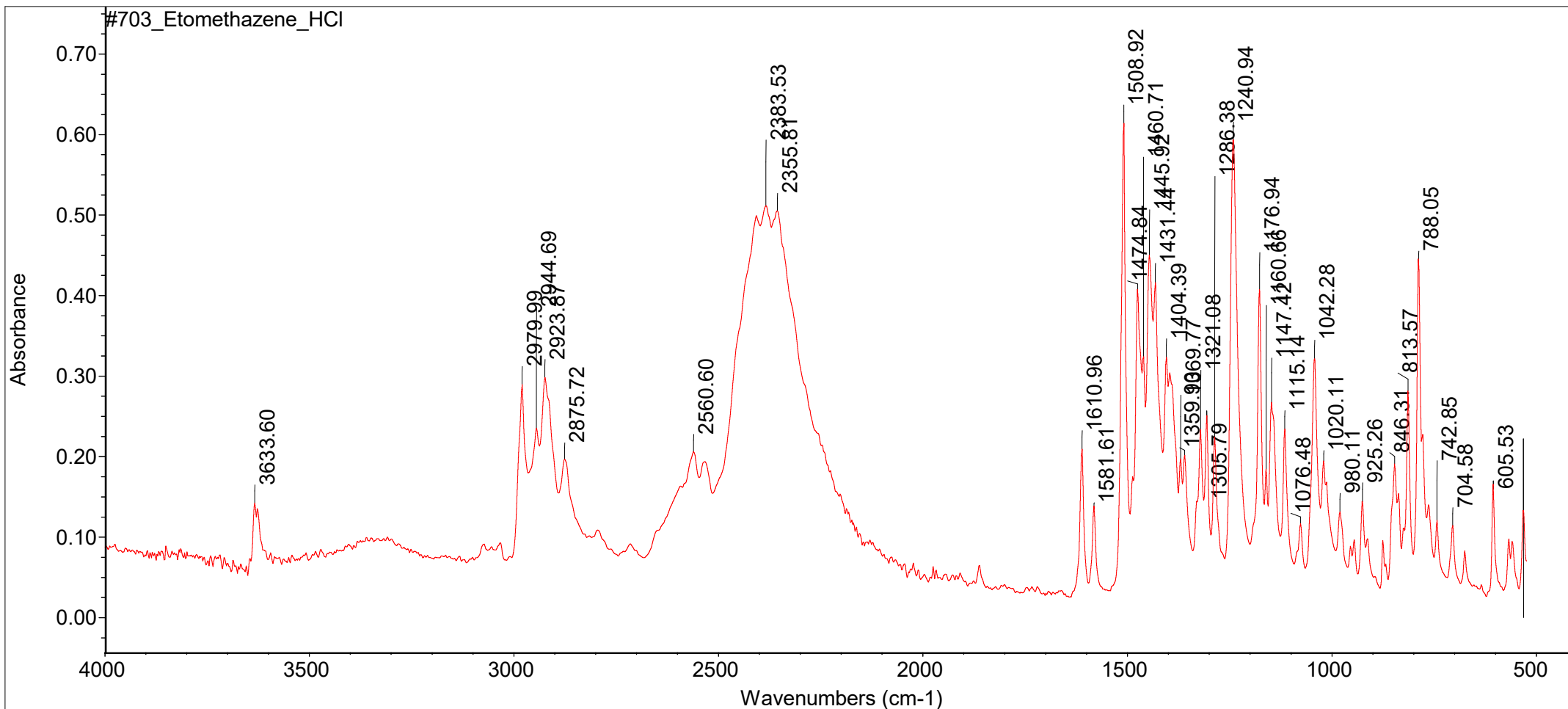
T: 33.3 °C

NS:32

d1: 43.0149

RG: 30.0





Fri Nov 10 23:56:52 2023 (GMT+01:00)

FIND PEAKS:

Spectrum: #703\_Etomethazene\_HCl  
 Region: 4000.00 400.00  
 Absolute threshold: 0.106  
 Sensitivity: 50  
 Peak list:

Position:	531.57	Intensity:	0.137
Position:	605.53	Intensity:	0.170
Position:	704.58	Intensity:	0.116
Position:	742.85	Intensity:	0.122
Position:	788.05	Intensity:	0.455
Position:	813.57	Intensity:	0.283
Position:	846.31	Intensity:	0.191

Position:	925.26	Intensity:	0.146
Position:	980.11	Intensity:	0.132
Position:	1020.11	Intensity:	0.195
Position:	1042.28	Intensity:	0.326
Position:	1076.48	Intensity:	0.117
Position:	1115.14	Intensity:	0.236
Position:	1147.42	Intensity:	0.267
Position:	1160.66	Intensity:	0.187
Position:	1176.94	Intensity:	0.414
Position:	1240.94	Intensity:	0.598
Position:	1286.38	Intensity:	0.226
Position:	1305.79	Intensity:	0.254
Position:	1321.08	Intensity:	0.234
Position:	1359.90	Intensity:	0.203
Position:	1369.77	Intensity:	0.198
Position:	1404.39	Intensity:	0.325
Position:	1431.44	Intensity:	0.419
Position:	1445.92	Intensity:	0.452
Position:	1460.71	Intensity:	0.327
Position:	1474.84	Intensity:	0.413
Position:	1508.92	Intensity:	0.629
Position:	1581.61	Intensity:	0.141
Position:	1610.96	Intensity:	0.212
Position:	2355.81	Intensity:	0.505
Position:	2383.53	Intensity:	0.512
Position:	2560.60	Intensity:	0.206
Position:	2875.72	Intensity:	0.196
Position:	2923.87	Intensity:	0.299
Position:	2944.69	Intensity:	0.236
Position:	2979.99	Intensity:	0.290
Position:	3633.60	Intensity:	0.143